

# CANTONMENT BOARD LANDOUR LAND USE PLAN 2020-30



## LEGEND:-

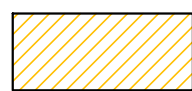
### (1) USED BY DRDO

- (I) A1 
- (II) A2 

### (2) INSTITUTIONAL USE

- (I) B1 
- (II) B2 
- (III) B4 

### (3) RESIDENTIAL



### (4) COMMERCIAL



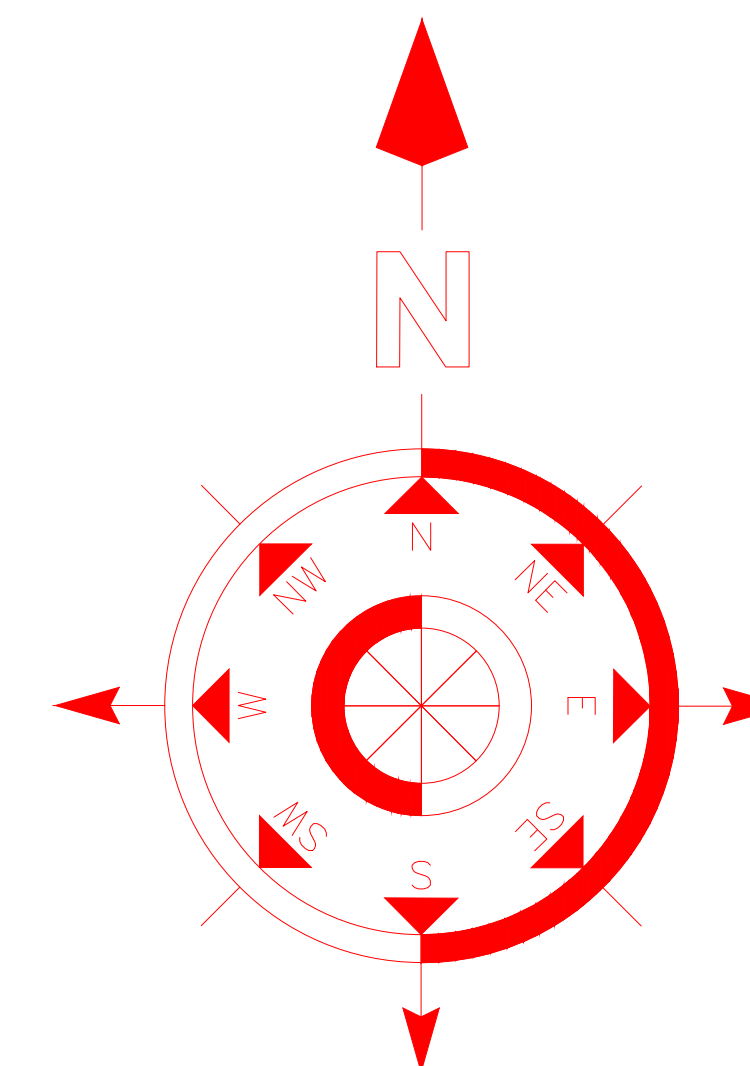
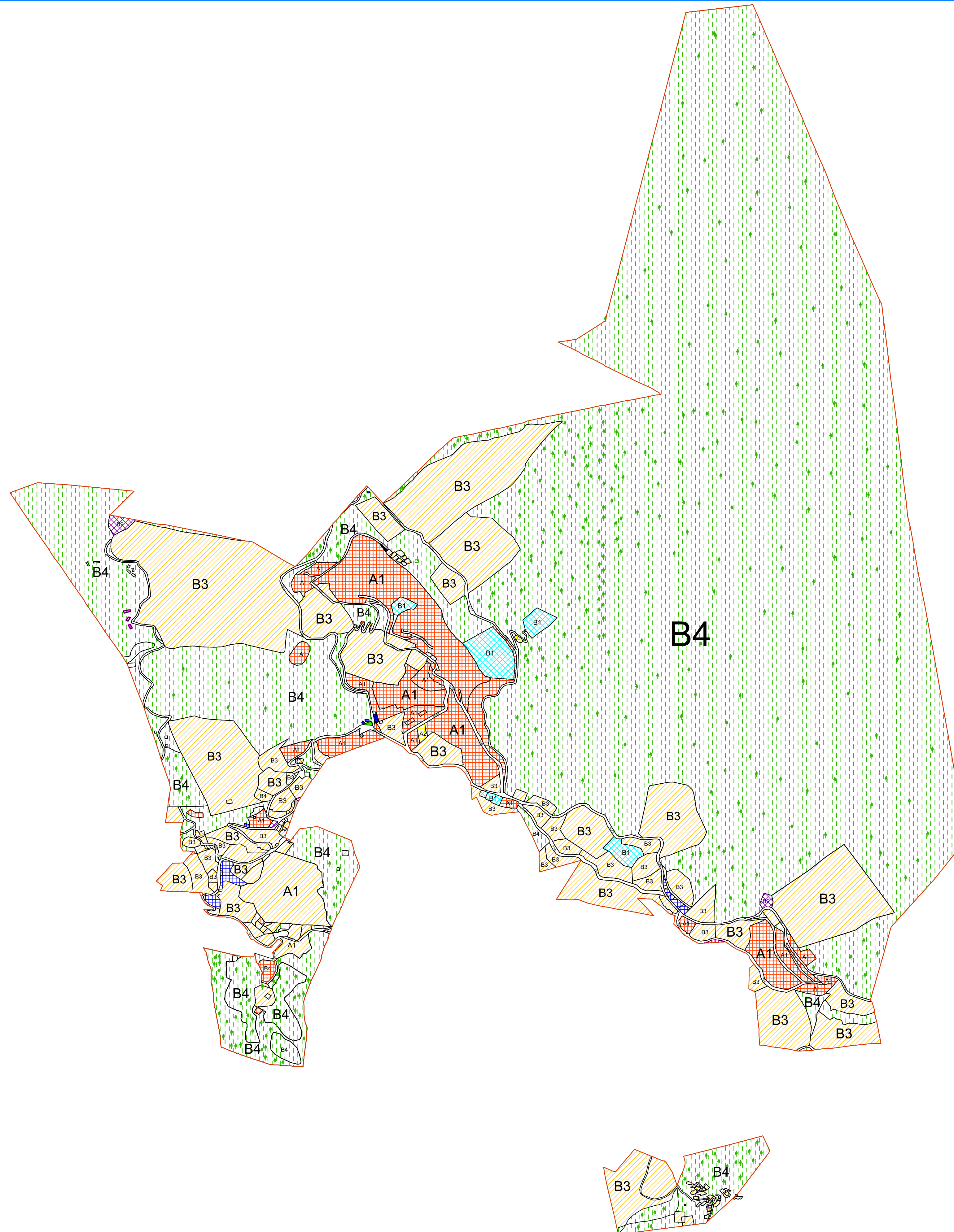
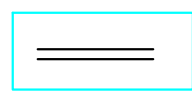
### (5) MIXED USE

- (I) PUBLIC UTILITY 

### (6) CANTONMENT BOUNDARY



### (7) ROAD



PREPARED BY-

**FORMATION ENGINEERING CONSULTANCY**  
JWALPA COMPLEXNAKRONDA ROAD HARRAWALA  
 DEHRADUN (UTTARAKHAND)  
 PH. 8126781628  
 E-MAIL: FORMATIONENGINEERING@GMAIL.COM

DEPARTMENT OF  
 CANTONMENT BOARD LANDOUR  
 LAND USE PLAN 2020-30

SIGNATURE  
 CHIEF EXECUTIVE OFFICER